



The Solid Sided Container

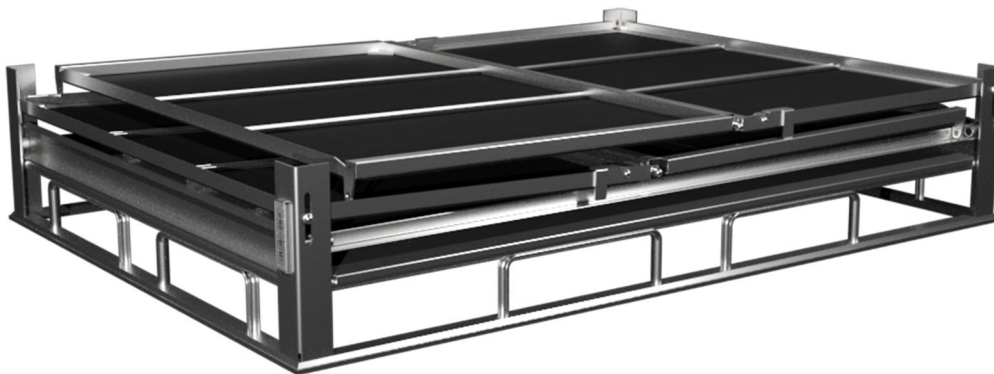
TrenStar SA offers a range of solid sided containers in various sizes to meet the requirements of almost every application.

Manufactured from high tensile steel, the chassis and frame construction are designed to accommodate load capacities of up to 1000 kg, which can be stacked up to 10 high in storage and up to 6 high in transit. (Depended on the container type). Hot dipped galvanised steel frames are clad with UV protected polypropylene coruplas and provides a splash proof design for added protection. The one piece fully collapsible design, allows the empty containers to be collapsed and stacked 2.4m high for optimised return logistics

The solid sided container range, all with the following features:

- ✦ One Piece Collapsible container, no lose components.
- ✦ Coruplas cladding, provide plash proof design.
- ✦ Lockable lids and Front Drop Down Gate, for added security.
- ✦ Front Drop Down Gate provide easy access, loading and unloading
- ✦ High tensile chassis construction
- ✦ Relatively light weight construction.
- ✦ Flat steel base plate.
- ✦ Full perimeter 4-Way entry base for easy pallet jack & forklift handling.

The solid sided containers are widely used in, but not limited to, Automotive, Component & Associated Industries, FMCG, Mining and Chemical Industries.





TYPE AD



Base Dimensions	1200 x 1000mm
Internal Dimensions	1100 x 900mm
Height Overall	855mm
Height Internal	700mm
Height Collapsed	345mm
Volume Outside	1,03m ²
Volume Collapsed	0,41m ²
Volume Inside	0,69m ²
Mass Nett	80kg
Mass Gross	1050kg

TYPE BA



Base Dimensions	1620 x 1200mm
Internal Dimensions	1520 x 1100mm
Height Overall	920mm
Height Internal	750mm
Height Collapsed	320mm
Volume Outside	1,79m ³
Volume Inside	1,25m ³
Volume Collapsed	0,62m ³
Mass Nett	118kg
Mass Gross	1120kg

TYPE DB



Base Dimensions	1000 x 595mm
Internal Dimensions	915 x 515mm
Height Overall	410mm
Height Internal	250mm
Height Collapsed	265mm
Volume Outside	0,24m ³
Volume Inside	0,12m ³
Volume Collapsed	0,16m ³
Mass Nett	31kg
Mass Gross	540kg

TYPE AB



Base Dimensions	1200 x 1000mm
Internal Dimensions	1100 x 900mm
Height Overall	620mm
Height Internal	460mm
Height Collapsed	315mm
Volume Outside	0,74m ³
Volume Inside	0,46m ³
Volume Collapsed	0,38m ³
Mass Nett	68kg
Mass Gross	1050kg

TYPE DA



Base Dimensions	1000 x 595mm
Internal Dimensions	900 x 500mm
Height Overall	625mm
Height Internal	460mm
Height Collapsed	300mm
Volume Outside	0,37m ³
Volume Inside	0,21m ³
Volume Collapsed	0,18m ³
Mass Nett	41kg
Mass Gross	540kg

Terms & Conditions Apply. E&OE

 **0860 TrenStar**

+27 (0) 12 676 3300 | info@trenstar.co.za

www.trenstar.co.za